

Scaled data based on original data using  
LM-66-11 Electrical and Photometric Measurements of Single-Ended Compact  
Fluorescent Lamps

Test Report Prepared for  
Cooper Lighting Solutions  
(formerly Eaton)

Brand: LUMIERE

Report Number: ITL52167

Luminaire Tested: **1900-IL-24-CF26**

Issue Date: 3/3/2020

**Test Information**

Test Method: LM-66-11  
Report Number: ITL52167  
Test Lab:  
Issue Date: 3/3/2020  
Manufacturer: COOPER LIGHTING SOLUTIONS (FORMERLY EATON)  
Product Line: LUMIERE  
Catalog Number: 1900-IL-24-CF26  
Description: CYLINDRICAL METAL HOUSING. FABRICATED METAL INTERNAL REFLECTOR ASSEMBLY WITH THREE GOLD FINISHED METAL POSTS CONNECTING MULTIPLE TIERED LOUVERS, ALL LOUVERS HAVE BLACK PAINTED UPPER SURFACE AND WHITE PAINTED LOWER SURFACE. CLEAR CYLINDRICAL PLASTIC LENS.  
Light Source: ONE 26-WATT TRIPLE TWIN TUBE COMPACT FLUORESCENT, SYLVANIA DULUX T/E CF26DT/E/IN/835, VERTICAL BASE-DOWN POSITION.  
Ballast/Driver: ENERGY SAVINGS ES-1-CFH-42/32/26-UNV-D

**Summary**

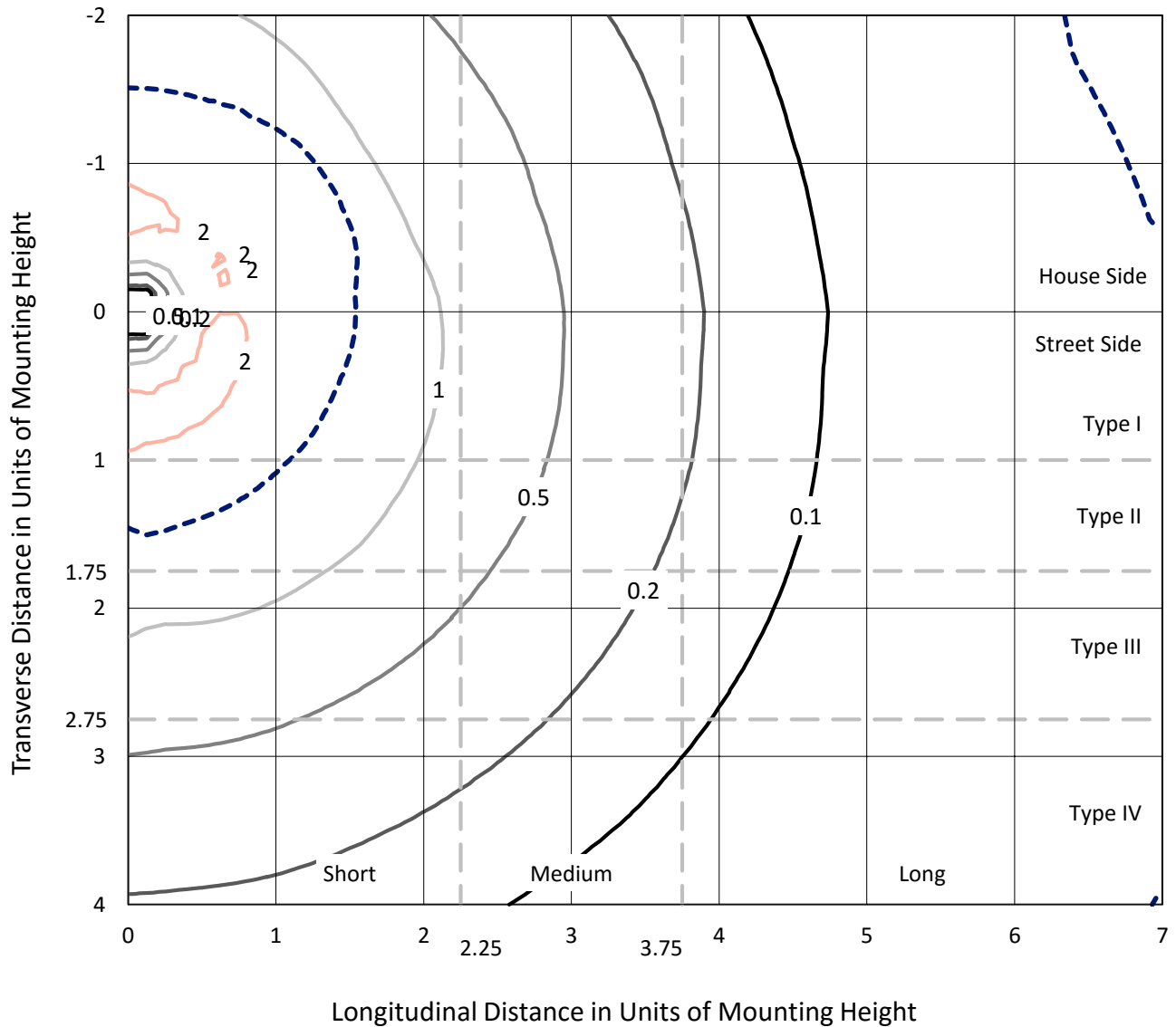
Lumens per Lamp: 1800 (1 lamp)  
Luminaire Lumens: 236.2 lumens  
Efficiency: 13.1%  
Efficacy: 7.8 lumens/watt  
Luminous Opening: (L: 0' x W: -0.29' x H: 0.35'  
IES Classification: Type V - Medium - Cutoff  
BUG Rating: B0 - U1 - G1  
  
Input Watts (W): 30.3  
Input Voltage (V): NR  
Input Current (A<sub>in</sub>): NR  
Voltage Rise (V): NR  
Power Factor: NR  
Total Harmonic Distortion (THDi): NR  
Frequency (hertz): 60  
Stabilization Time: NR  
Operation Time: NR  
Ambient Temperature (°C): NR  
Test Distance: 25 FT



REPORT NUMBER: ITL52167  
 CATALOG NUMBER: 1900-IL-24-CF26

### Iso-Footcandle Lines of Horizontal Illumination

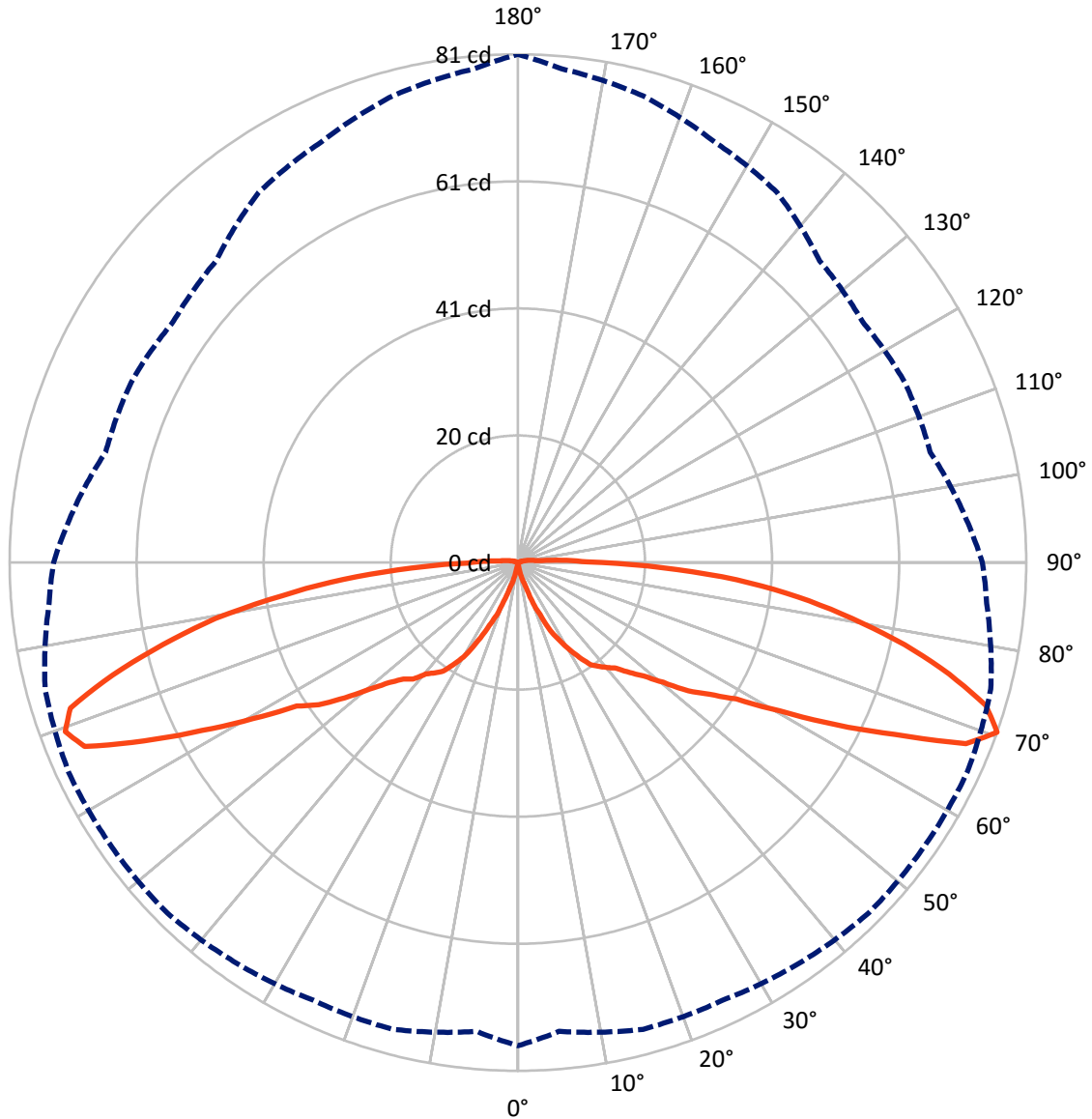
× Max cd  
 - - - 1/2 Max cd



Based on 2.2 foot mounting height. Maximum calculated value = 2.3 fc  
 Type V - Medium - Cutoff

REPORT NUMBER: ITL52167  
CATALOG NUMBER: 1900-IL-24-CF26

### Luminous Intensity Polar Plot



— Vertical Plane Through 180-Deg Lateral      - - - Horizontal Cone Through 70-Deg Vertical

REPORT NUMBER: ITL52167

CATALOG NUMBER: 1900-IL-24-CF26

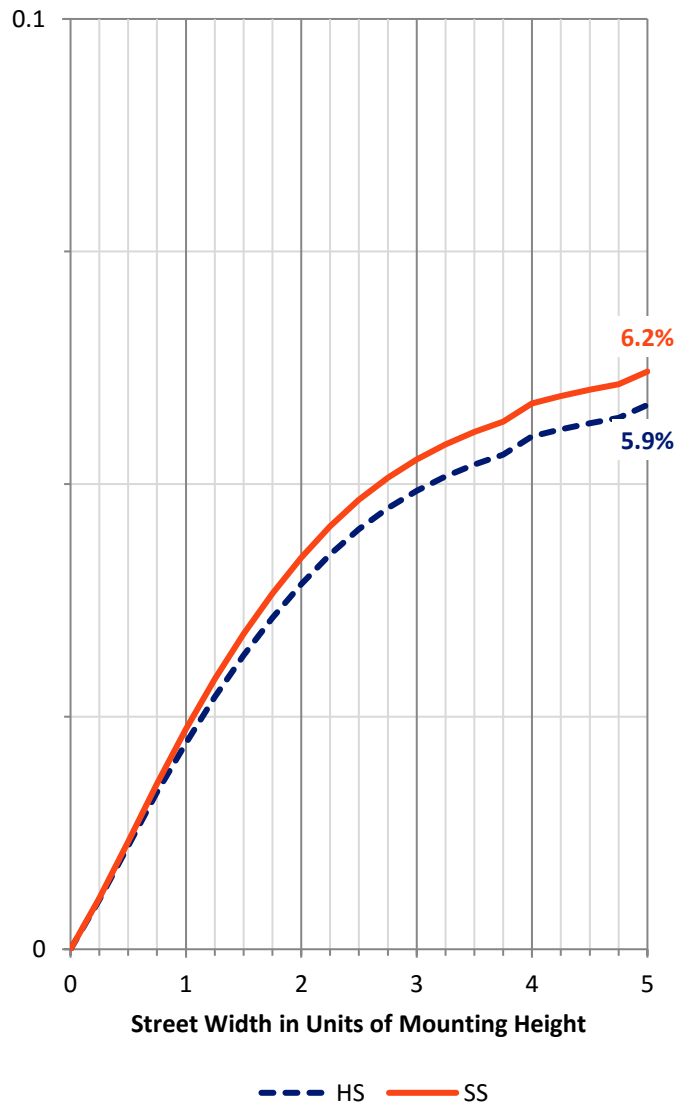
**FLUX DISTRIBUTION:**

		Downward	Upward	Total
<b>House Side</b>	Lumens	112.0	2.5	114.6
	% Lamp	6.2	0.1	6.4
<b>Street Side</b>	Lumens	119.1	2.5	121.7
	% Lamp	6.6	0.1	6.8
<b>Total</b>	Lumens	231.1	5.1	236.2
	% Lamp	12.8	0.3	13.1

**Coefficient of Utilization**

**ZONAL LUMENS:**

Zone	Lumens	% Fixture	% Lamp
0°-10°	0.0	0.0	0.0
10°-20°	0.8	0.3	0.0
20°-30°	5.0	2.1	0.3
30°-40°	11.7	5.0	0.7
40°-50°	19.3	8.2	1.1
50°-60°	33.4	14.1	1.9
60°-70°	62.3	26.4	3.5
70°-80°	67.6	28.6	3.8
80°-90°	31.1	13.2	1.7
90°-100°	3.9	1.6	0.2
100°-110°	1.1	0.5	0.1
110°-120°	0.2	0.1	0.0
120°-130°	0.0	0.0	0.0
130°-140°	0.0	0.0	0.0
140°-150°	0.0	0.0	0.0
150°-160°	0.0	0.0	0.0
160°-170°	0.0	0.0	0.0
170°-180°	0.0	0.0	0.0
0°-90°	231.1	97.8	12.8
0°-180°	236.2	100.0	13.1



REPORT NUMBER: ITL52167

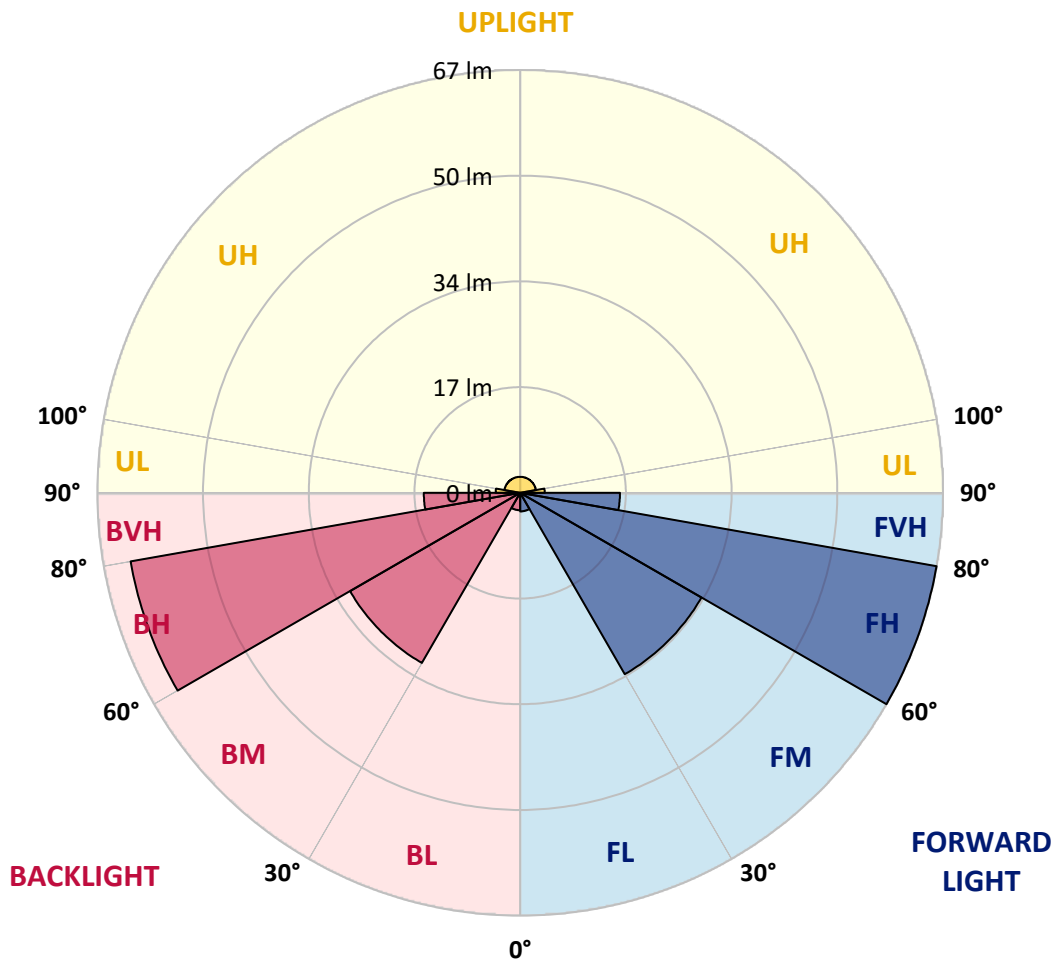
CATALOG NUMBER: 1900-IL-24-CF26

**LUMINAIRE CLASSIFICATION SYSTEM LUMEN TABLE AND BUG RATING:**

Zone	Lumens	% Lamp	Zone Rating/Lumen Limit		
			B	U	G
FL (0°-30°)	3.0	0.2			
FM (30°-60°)	33.2	1.8			
FH (60°-80°)	67.1	3.7			G0/660
FVH (80°-90°)	15.8	0.9			G1/100
BL (0°-30°)	2.8	0.2	B0/110		
BM (30°-60°)	31.2	1.7	B0/220		
BH (60°-80°)	62.8	3.5	B0/110		G0/660
BVH (80°-90°)	15.3	0.8			G1/100
UL (90°-100°)	3.9	0.2		U1/10	
UH (100°-180°)	2.5	0.1		U1/10	
Trapped Light	1563.8	86.9			

**BUG Rating: B0-U1-G1**

Type V Medium





REPORT NUMBER: ITL52167  
 CATALOG NUMBER: 1900-IL-24-CF26

**CANDELA DISTRIBUTION (FULL):**

	0°	5°	15°	25°	35°	45°	55°	65°	75°	85°	90°
0°	0	0	0	0	0	0	0	0	0	0	0
2.5°	0	0	0	0	0	0	0	0	0	0	0
5°	0	0	0	0	0	0	0	0	0	0	0
7.5°	0	0	0	0	0	0	0	0	0	0	0
10°	0	0	0	0	0	0	0	0	0	0	0
12.5°	1	1	1	1	1	1	1	1	1	1	1
15°	3	2	2	2	2	2	2	2	2	2	2
17.5°	4	3	3	4	4	4	4	4	4	4	4
20°	6	5	6	6	6	6	6	6	6	6	6
22.5°	9	8	8	8	8	8	8	8	8	8	8
25°	11	10	10	10	11	11	11	11	11	10	10
27.5°	14	13	13	13	14	14	14	14	14	13	13
30°	17	16	16	16	16	16	16	16	16	15	15
32.5°	19	18	18	18	18	18	18	18	18	17	16
35°	21	20	20	20	20	20	20	20	19	18	18
37.5°	22	21	21	21	21	21	21	21	20	20	19
40°	23	22	22	22	22	22	22	22	21	21	20
42.5°	25	24	24	24	24	24	23	23	23	22	22
45°	26	25	26	26	26	25	25	25	25	24	24
47.5°	28	28	28	28	28	28	28	27	27	27	26
50°	31	30	31	31	31	31	30	30	30	30	30
52.5°	35	34	34	35	35	35	34	34	34	33	33
55°	39	37	38	38	38	38	37	37	37	36	36
57.5°	42	41	42	42	42	42	42	42	41	40	40
60°	49	47	48	48	49	49	48	48	47	47	47
62.5°	57	54	56	55	57	57	57	56	56	55	55
65°	66	63	65	66	66	67	66	66	65	64	63
67.5°	75	72	74	75	76	77	77	76	75	73	72
70°	77	75	77	77	78	79	79	79	78	75	74
72.5°	75	73	74	74	75	76	76	77	75	72	72
75°	67	66	67	66	67	68	69	69	68	65	65
77.5°	58	58	58	58	58	60	60	60	59	56	57
80°	49	48	49	48	49	50	51	51	50	48	48
82.5°	38	38	39	38	39	41	41	41	40	38	39
85°	28	29	29	30	29	30	31	31	30	28	29
87.5°	17	18	18	18	18	18	19	19	19	17	17
90°	8	8	8	8	9	9	9	9	9	9	9
95°	3	2	2	2	2	2	2	2	2	2	2
105°	1	1	1	1	1	1	1	1	1	1	1
115°	0	0	0	0	0	0	0	0	0	0	0
125°	0	0	0	0	0	0	0	0	0	0	0
135°	0	0	0	0	0	0	0	0	0	0	0
145°	0	0	0	0	0	0	0	0	0	0	0
155°	0	0	0	0	0	0	0	0	0	0	0
165°	0	0	0	0	0	0	0	0	0	0	0



REPORT NUMBER: ITL52167

CATALOG NUMBER: 1900-IL-24-CF26

**CANDELA DISTRIBUTION (continued):**

	0°	5°	15°	25°	35°	45°	55°	65°	75°	85°	90°
175°	0	0	0	0	0	0	0	0	0	0	0
180°	0	0	0	0	0	0	0	0	0	0	0





REPORT NUMBER: ITL52167  
 CATALOG NUMBER: 1900-IL-24-CF26

**CANDELA DISTRIBUTION (continued):**

	95°	105°	115°	125°	135°	145°	155°	165°	175°	180°
0°	0	0	0	0	0	0	0	0	0	0
2.5°	0	0	0	0	0	0	0	0	0	0
5°	0	0	0	0	0	0	0	0	0	0
7.5°	0	0	0	0	0	0	0	0	0	0
10°	0	0	0	0	0	0	0	0	0	0
12.5°	1	1	1	1	1	1	1	1	1	2
15°	2	2	2	2	2	2	2	2	2	3
17.5°	4	3	3	3	3	4	4	4	4	4
20°	5	5	5	5	5	5	6	6	6	7
22.5°	8	7	7	7	7	7	8	8	9	9
25°	10	10	10	10	10	10	10	11	11	12
27.5°	13	12	12	12	12	12	13	13	14	14
30°	15	14	14	14	14	14	15	15	16	16
32.5°	16	16	16	16	16	16	16	17	17	18
35°	18	18	18	18	17	17	18	19	19	20
37.5°	19	19	19	19	19	19	19	20	20	21
40°	21	21	21	20	20	20	20	21	21	22
42.5°	22	22	22	22	21	21	21	22	22	23
45°	24	24	24	23	23	23	23	24	24	25
47.5°	26	26	26	26	26	26	26	27	27	27
50°	29	29	28	28	28	29	29	30	30	30
52.5°	33	32	31	31	31	32	32	33	33	34
55°	36	35	35	34	34	35	36	37	37	37
57.5°	40	38	38	38	38	39	40	41	41	41
60°	46	44	43	43	43	46	47	48	48	48
62.5°	53	51	50	50	51	53	55	56	57	57
65°	62	58	57	56	58	61	63	65	66	66
67.5°	70	66	65	64	65	69	72	75	76	77
70°	72	68	68	67	68	72	74	77	79	81
72.5°	70	66	67	66	66	69	72	75	76	78
75°	63	60	61	60	60	63	65	67	69	71
77.5°	55	53	53	53	53	55	57	60	61	63
80°	46	44	45	44	44	47	48	50	52	54
82.5°	37	36	36	35	36	38	40	41	42	45
85°	28	26	27	27	27	28	30	32	32	35
87.5°	17	17	17	17	17	18	18	19	20	23
90°	9	8	8	8	8	9	9	9	10	11
95°	2	2	2	2	2	2	2	2	2	3
105°	1	1	1	1	1	1	1	1	1	1
115°	0	0	0	0	0	0	0	0	0	0
125°	0	0	0	0	0	0	0	0	0	0
135°	0	0	0	0	0	0	0	0	0	0
145°	0	0	0	0	0	0	0	0	0	0
155°	0	0	0	0	0	0	0	0	0	0
165°	0	0	0	0	0	0	0	0	0	0



REPORT NUMBER: ITL52167

CATALOG NUMBER: 1900-IL-24-CF26

**CANDELA DISTRIBUTION (continued):**

	95°	105°	115°	125°	135°	145°	155°	165°	175°	180°
175°	0	0	0	0	0	0	0	0	0	0
180°	0	0	0	0	0	0	0	0	0	0

(END OF REPORT)